



# WORKSHOP UPGRADES & SERVICES

*Pricing as of 21/03/2020.*

Revision A – 21/03/20

## **STONE GUARDS**

*Coast to Coast Type - **\$375 Fitted***



*Stone D-flector Type - **\$620 Fitted***



## **AUSSIE TRAVELLER ANTI-FLAP KIT**

**\$450 fitted**



## **CURVED ROOF RAFTERS**

*Aussie Traveller - **\$110** each installed*



*Supex - **\$85** each installed*

## **POLE CARRIERS**

**4" - \$163 each installed**

**6" - \$170 each installed**



## ***ANNEXES By Xtend Outdoors***

***Up to 21ft Caravans - \$2750***

***22ft and over caravans - \$2850***

### ***Inclusions:***

- *Vinyl Bottom, Canvas Top, 4 x Removable Panels*
- *Incorporates Flyscreens and Window Panels.*
- *2 x End Walls*
- *1 x Long Wall*
- *Draft Skirt*
- *Anti-Flap Kit*
- *2 x Curved Roof Rafters*
- *Custom Measured and Ordered to Fit*
- *Fully Installed*



**XTEND**  
— OUTDOORS —



## ***SHADE ACCESSORIES By Xtend Outdoors***

***Reversable Porch - \$390***



***Camper Offside Kitchen Awnings - \$490 installed***



## **CLOTHESLINES**

*Fitted to Manual Awnings - **\$110** installed*



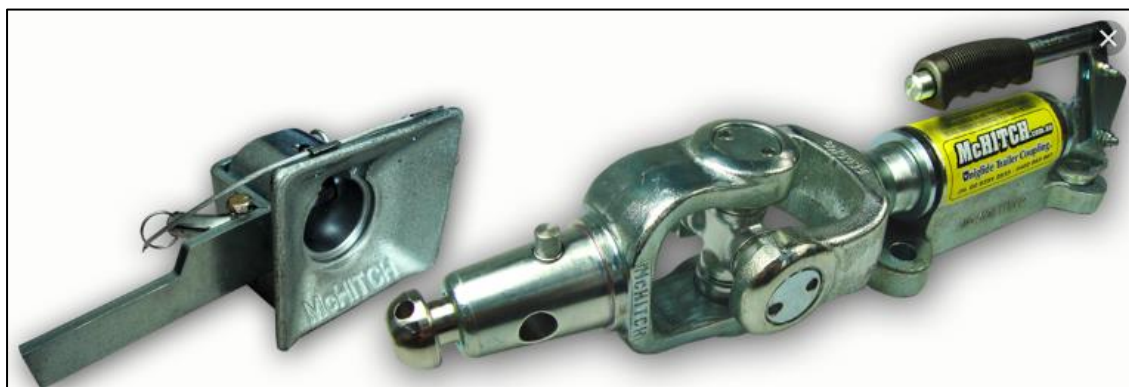


## **COUPLINGS**

*Includes Coupling, Installation to van and car, and Park Brake fully adjusted.*



**DO35 - \$620**  
*installed*



**McHitch - \$550**



**Trigg - \$450**



## **BIKE RACKS**

### ***Fiamma Pro C – Simple Installation - \$750***

*Price for Jayco Installations. Existing blocking in rear wall and no obstructions for installation internally.*

### ***Fiamma Pro C – Complex Installation - \$1200***

*Price for Jayco Installations. Existing blocking in rear wall, requires removal of internal mirror and includes replacement mirror to be installed after bike rack installation..*



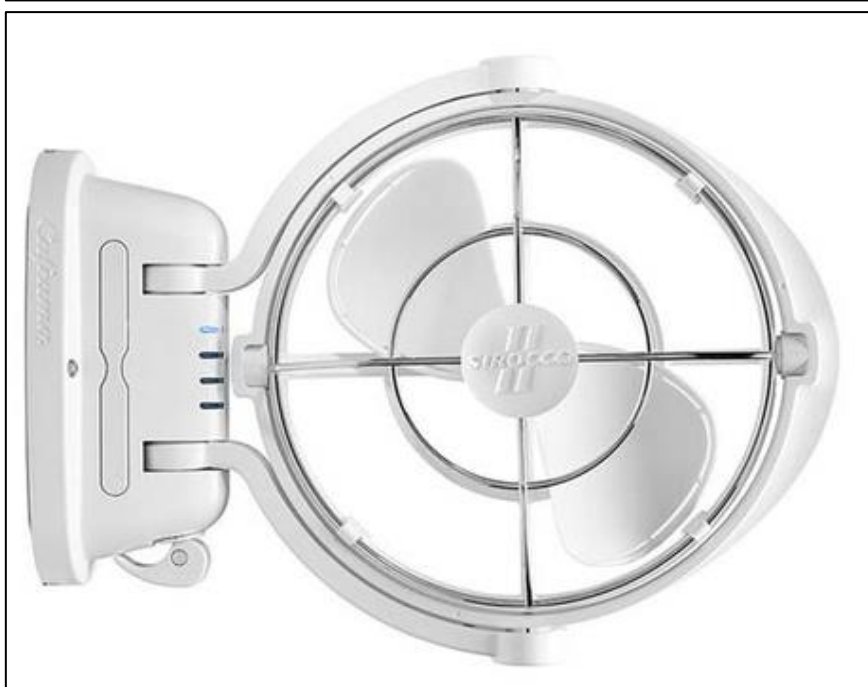
### ***Gripsport A-Frame Mounted – From \$1,110 fitted.***



**SIROCCO FANS** – available in white or black

**\$225 Installed** – Nearby permanent 12v power supply easily accessible

**\$325 Installed** – New power supply required





## ***ANDERSON PLUG for External Solar Panels - \$90***

*Installed behind side cross member, ran direct to battery*



## **SOLAR PANELS**

*New Installation including 30A Regulator (existing factory provision) - **\$750** installed.*

*New Installation including 30A Regulator (no provision) - **\$990** installed.*

*Additional 160W Solar Panel - **\$646** Installed*





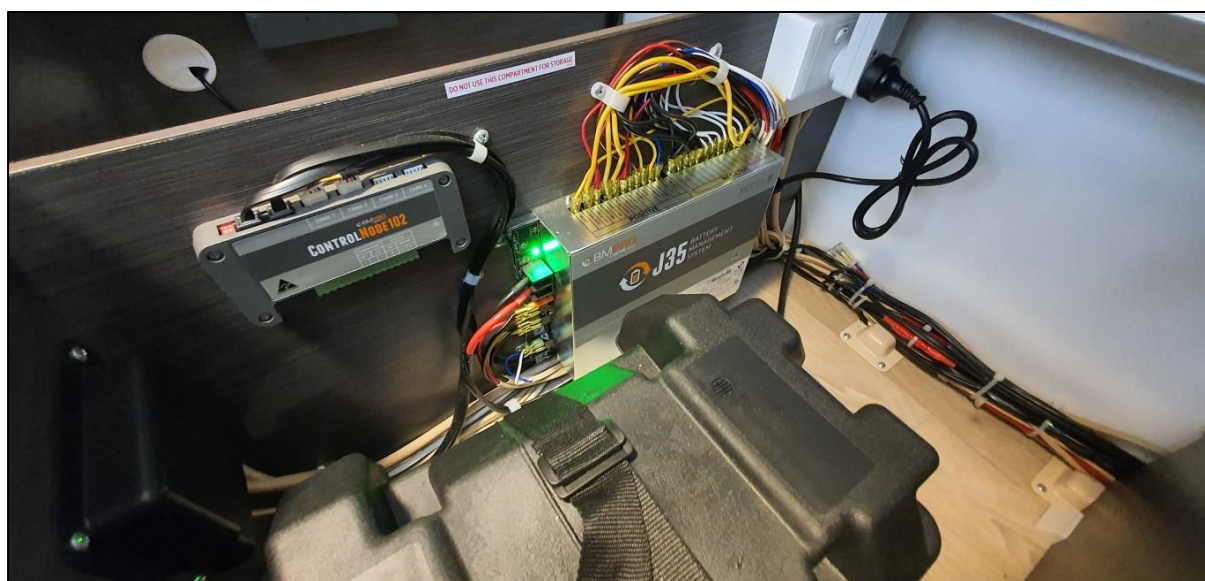
## ***DEEP CYCLE BATTERIES***

***Additional Battery – 100A Ritar AGM - \$558***

***Additional Battery – 100A Ritar Gel - \$575***

***Additional Battery – 120A Ritar AGM - \$575***

***Includes new box, battery wiring & charging configuration***

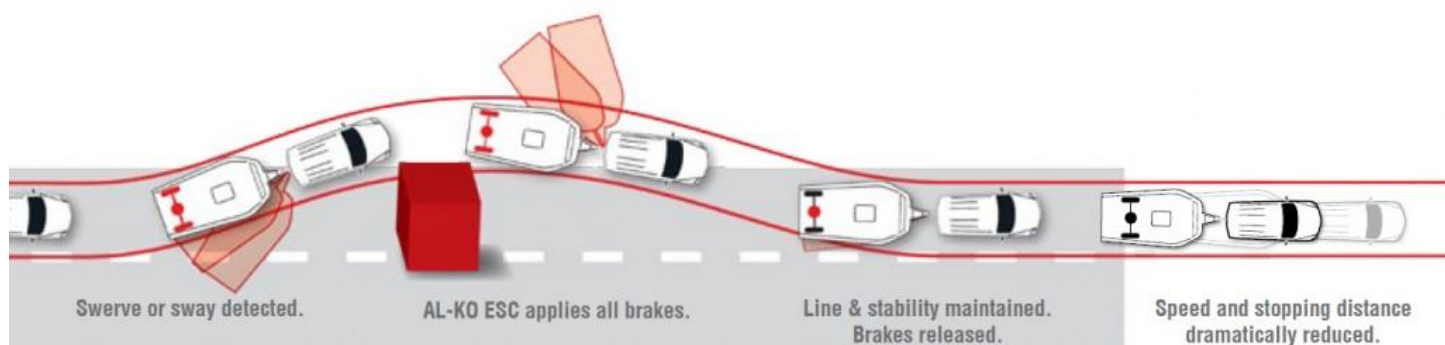


## **AL-KO ESC**

***New Installation - \$1295***

***Jayco Provision - \$1095***

*Tow Vehicle to have Power on  
Pin 2*





## **EXTERNAL LIGHTS**

*Camper Light, switchable – **\$130** installed*

*Nearby permanent power supply needed*



*External LED Light - **\$185** installed*

*Nearby permanent power supply needed. Switch to be run internally nearby power supply.*



## ***AUTO ELECTRICAL WIRING***

*Prices below for Vehicle Category 1: Japanese Makes, Holden & Ford*

*Add \$50 for Vehicle Category 2:  
European, British, American,  
Chinese, Hyundai, Ford Territory,  
Holden Captiva*

*Redarc Tow Pro Brake  
Controller – Fully Installed -  
**\$750***



*Fridge Heavy Duty Power  
Supply (to Anderson or 12  
pin plug) & Auxillary  
Power Supply to Pin 2 -  
**\$600***



*Includes Voltage Sensing Relay*

**Full Combination Installation - \$1050 (save \$200)**

*Redarc Tow Pro Brake Controller*

*Heavy Duty Fridge Power Supply*

*Auxillary Power Supply to Pin 2, Anderson Plug*



## **REVERSE CAMERAS**

*Sphere Reverse Camera Wiring to Vehicle - **\$300***

*Or only \$100 extra if already doing the full installation*



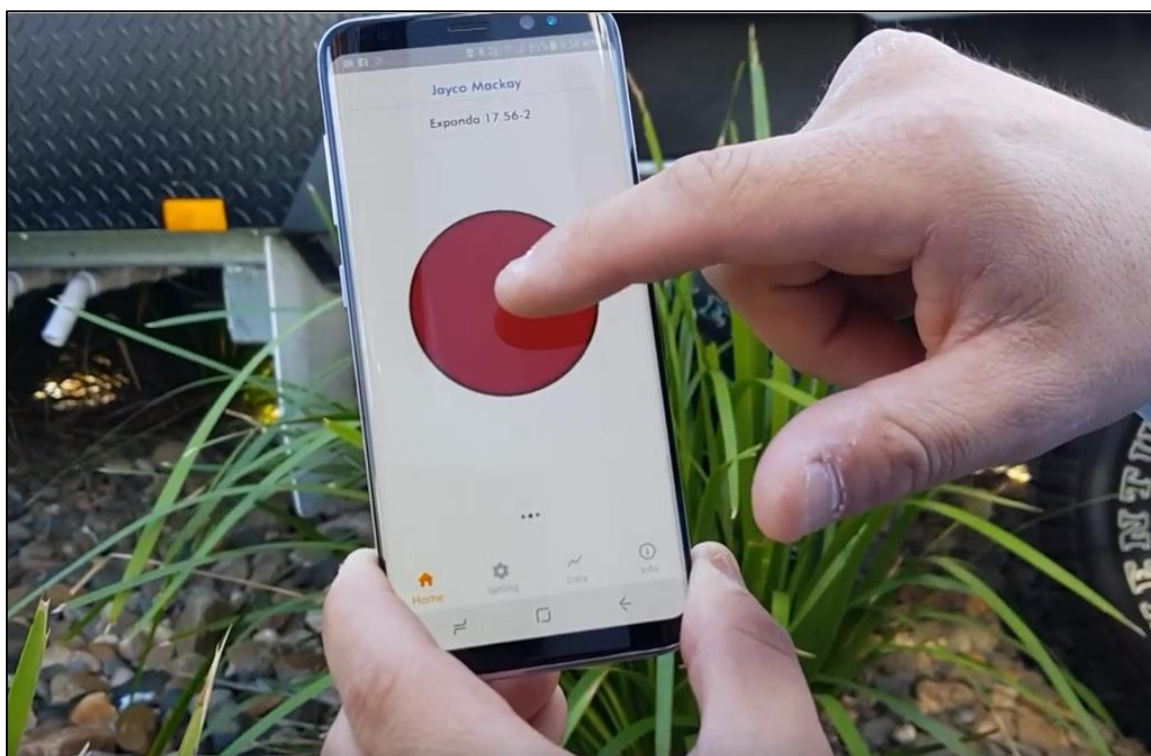
*Sphere Reverse Camera System Installed to Rear of Van - **\$250***

*Custom bracket fabricated. Mounts from rear bumper bar*

## **ELECBRAKES**

*Wireless brake controller system - **\$925** installed*

*Includes Auxillary Power Supply fed from caravan house battery. Simple installation with Aux Power - \$795*



## **AIR CONDITIONER REPLACEMENTS**

*Replacements – A/C Unit Price (varies) + \$475*

*New Installations – A/C Unit Price (varies) + \$1125*

*Includes electrical disconnection/connection & disposal*





## ***PICNIC TABLES***

*Nomadic – Parts Price (varies) + \$125 labour*



*Jayco Fibreglass Picnic Table - **\$410** installed*

## ***CARAVAN DETAILING SERVICE***

*(strictly subject to assessment & availability)*

***External Wash (Body and Roof)***

***Campers - \$140***

***Poptops - \$190***

***Caravans - \$230***



***Professional Buff and Wax  
(includes external wash) –  
subject to assessment***



<b><u>Guide Pricing</u></b>	<b><i>Light/Medium Dull</i></b>	<b><i>Very Dull</i></b>
<b><i>Poptop</i></b>	<b><i>\$550</i></b>	<b><i>\$650</i></b>
<b><i>Caravan &lt;19ft</i></b>	<b><i>\$660</i></b>	<b><i>\$770</i></b>
<b><i>Caravan &gt;20ft</i></b>	<b><i>\$770</i></b>	<b><i>\$890</i></b>

## **GAS BOTTLE REFILLS**

**9kg - \$38**

*(full refill price only, half re-fills not available)*





## ***ADDITIONAL JOCKEY WHEEL CLAMP***

*Touch-up painting with Cold Galvanising Paint*

*Welded to A-Frame, Passenger Side - **\$99***

*Welded to A-Frame, Drivers Side - **\$160***

*More expensive due to wiring loom*

